

Specifications and Drawings of QJR6-1400H

I. QJR6-1400H Robot basic specification table

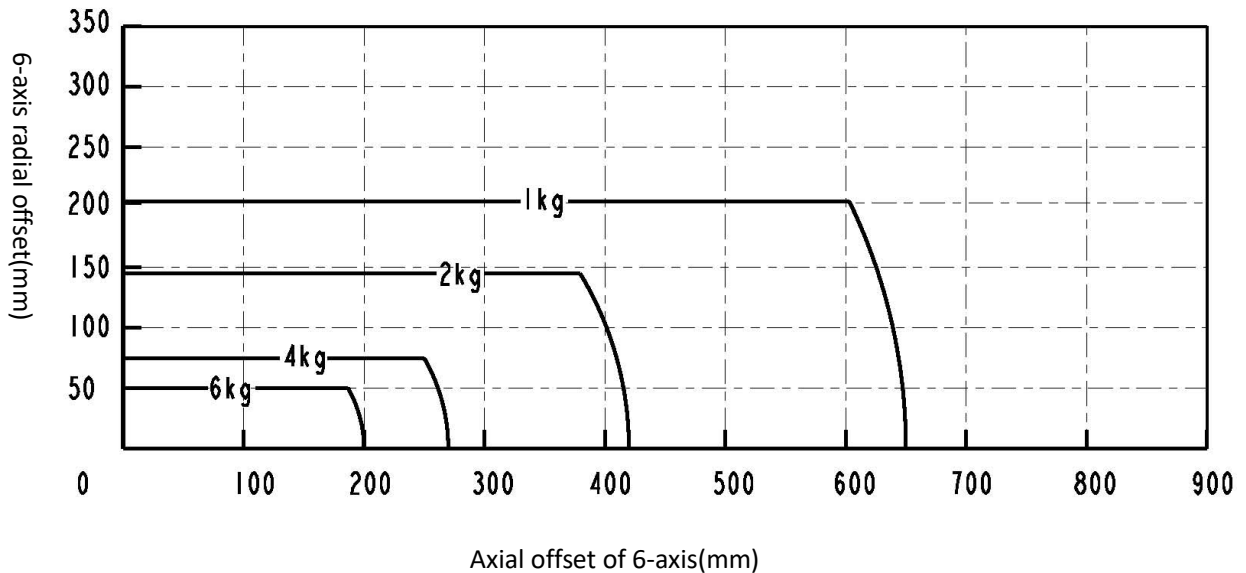
QJR6-1400H Basic specification sheet			
Body shape		Vertical multiarticular	
Degrees of freedom		6	
The payload		6kg	
Arm span		1456mm	
Repeated positioning accuracy ^{^2}		±0.08mm	
Mechanical limit range	1axis	±168°	
	2axis	+159° , -97°	
	3axis	+95° , -125°	
	4axis	±183°	
	5axis	+129° , -126°	
	6axis	±360°	
Maximum speed	1axis	3.8rad/s	217°/s
	2axis	3.8rad/s	217°/s
	3axis	4.2rad/s	240°/s
	4axis	6.3rad/s	360°/s
	5axis	5.6rad/s	320°/s
	6axis	17rad/s	974°/s
Allow the torque	4axis	12.12N.m	
	5axis	12.12N.m	
	6axis	2.94N.m	
Inertia moment	4axis	0.26kg.m ²	
	5axis	0.26kg.m ²	
	6axis	0.015kg.m ²	
Body weight		150 kg	
Installation environment	temperature	0~45 °C	
	humidity	20%~80% RH(No condensation)	
	vibration	<4.9m/s ² (0.5G)	
	other	Avoid flammable, corrosive gases and liquids; Avoid contact with water, oil, dust, etc. Keep away from electrical noise sources.	
The power capacity		2.65kVA	

II. QJR6-1400H Diagram of the robot's overall size and maximum motion range

1. Load upper limit 6kg state :

QJR6-1400H Acceleration configuration table			
Maximum acceleration	1axis	19 rad/s ²	1088.6°/s ²
	2axis	17 rad/s ²	974.0°/s ²
	3axis	35 rad/s ²	2005.4°/s ²
	4axis	50 rad/s ²	2864.8°/s ²
	5axis	40 rad/s ²	2291.8°/s ²
	6axis	80 rad/s ²	4583.6°/s ²
Load upper limit		6kg	

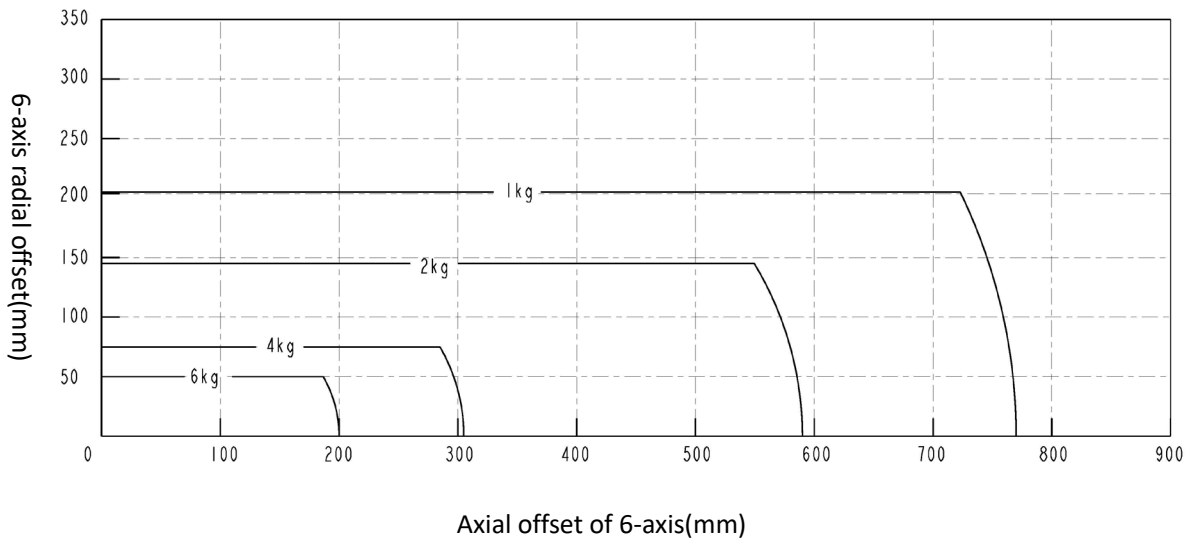
Robot Load Chart (The center of 5 axis is zero point)



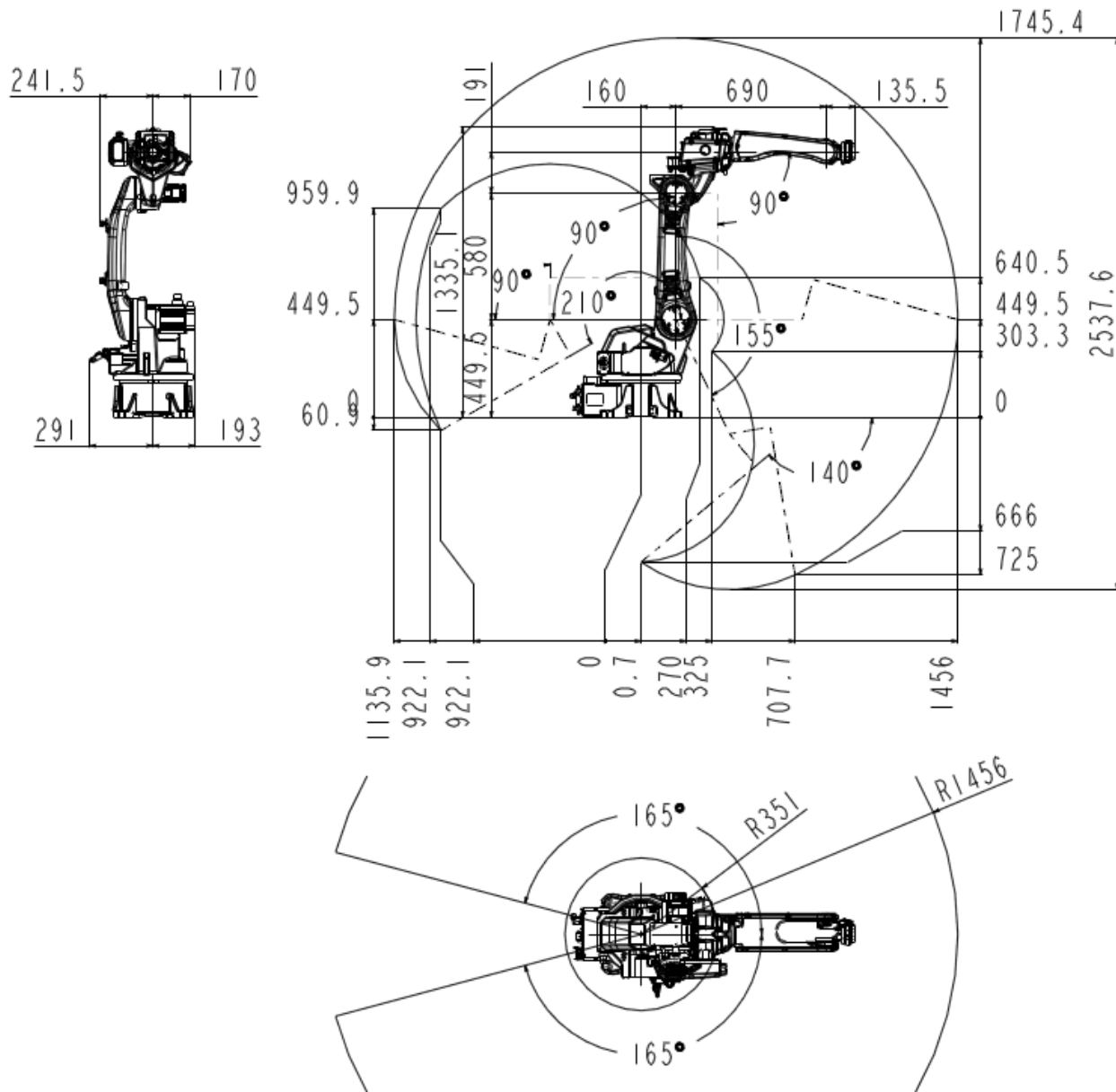
2. Load upper limit 6kg state :

QJR6-1400H Acceleration configuration table			
Maximum acceleration	1axis	19 rad/s ²	1088.6°/s ²
	2axis	17 rad/s ²	974.0°/s ²
	3axis	35 rad/s ²	2005.4°/s ²
	4axis	50 rad/s ²	2864.8°/s ²
	5axis	40 rad/s ²	2291.8°/s ²
	6axis	40 rad/s ²	2291.8°/s ²
Load upper limit		6kg	

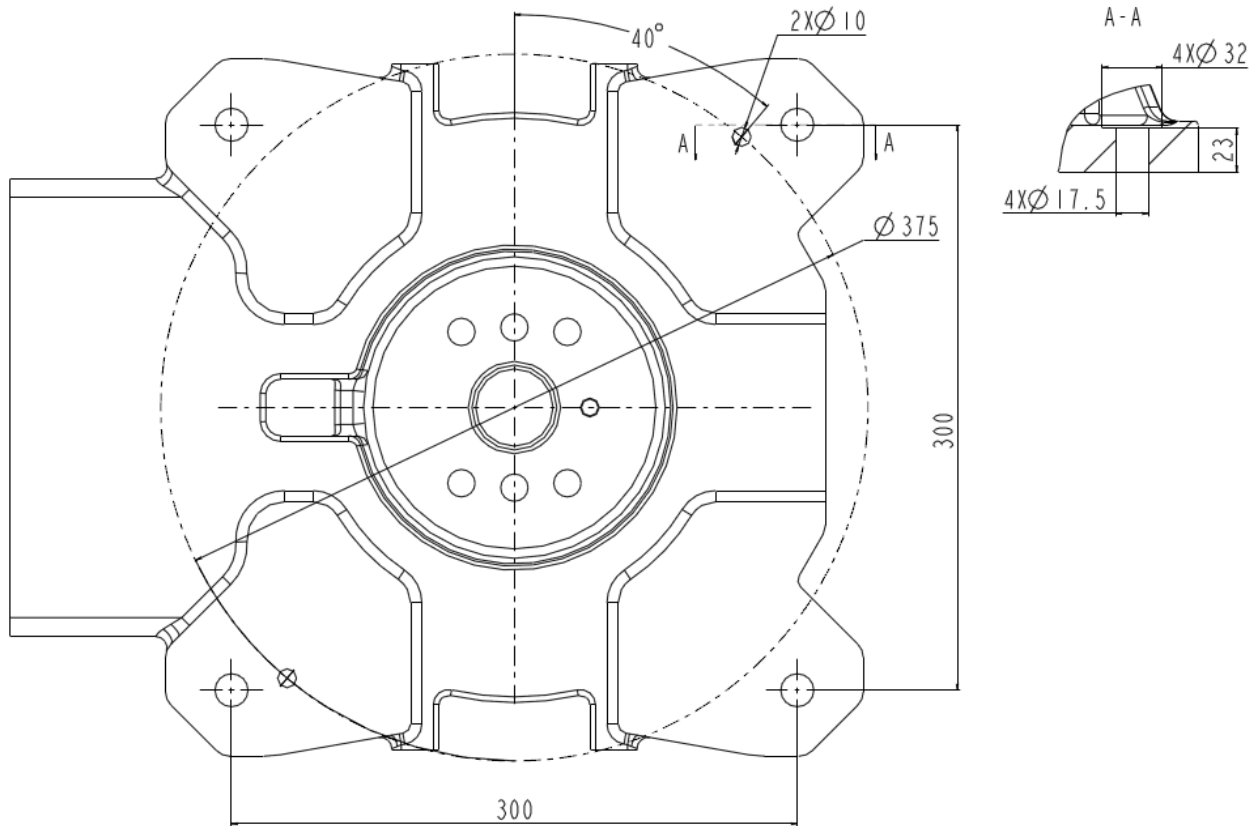
Robot Load Chart (The center of 5 axis is zero)



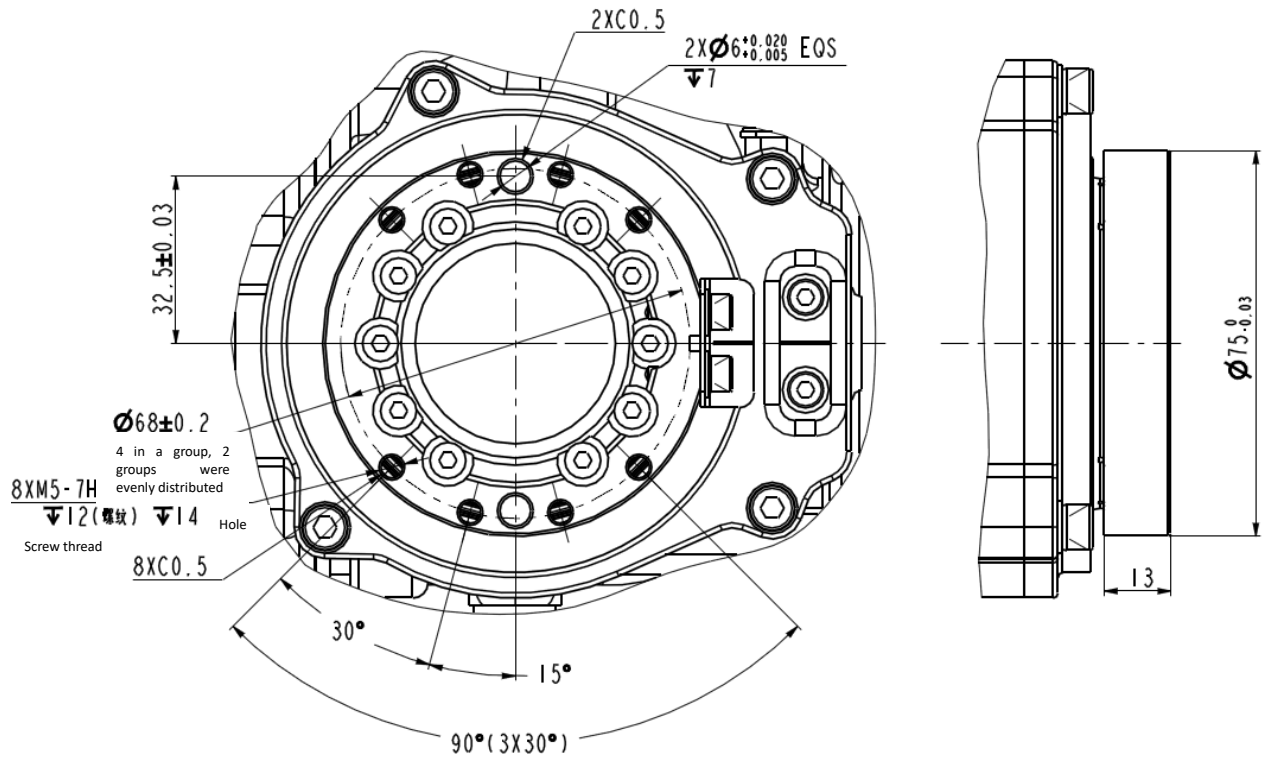
III. QJR6-1400H Diagram of the robot's overall size and maximum motion range



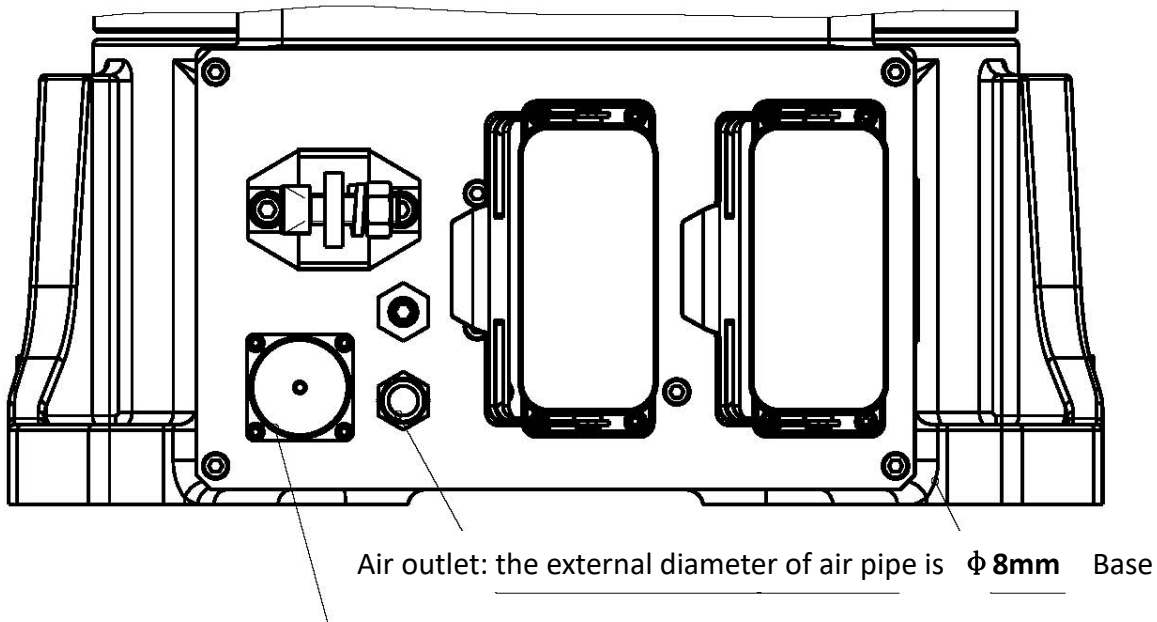
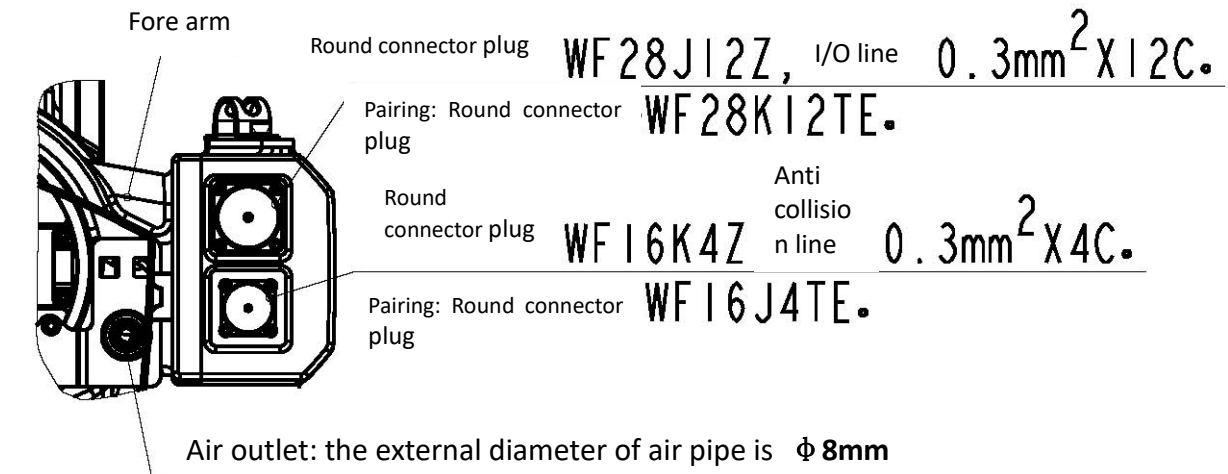
IV. QJR6-1400H Robot base mounting dimension drawing



V. QJR6-1400H Installation dimension drawing of robot end



VI. Schematic diagram of robot reserved gas path and I / O interface position



Round connector plug **WF28J12Z-3**, I/O line: **0.3mm² X 12C**

Pairing: Round connector plug **WF28K12TE-3**,

10A cold pressing female **YK1.5-20.4-1.OAU**

(1.OAU is optional according to the need)

explain:

The base and the fore arm position circular connector plug are connected in the same position

VII. QJR6-1400H Configuration table of robot products

QJR6-1400H Configuration table of robot products	
Motor	Gaohuachuangke
RV reducer	Shuanghuan reinforced type
Harmonic reducer	Shimpo
Controller	QJAR
Driver	Tsino dynatron

VIII. QJR6-1400H Controller cabinet

QJR6-1400H controller cabinet	
Control hardware	QJAR controller
Control cabinet software	QJAR system
Power Supply	Three phase four wire AC380V (+ 10%, - 10%)
Rated power	4.4KW
Power capacity	2.65KVA
Size of control cabinet	580x600x960mm
Weight of control cabinet	130kg
ambient temperature	0-45°C
Maximum humidity	20%~80% RH (no condensation)
Protection level	IP54
operation panel	On the control cabinet
Programming unit	Color touch screen teaching box
Security	Emergency stop, automatic mode stop, remote mode stop
Input and output	Digital IO 7 input 13 output Analog 2 output